



FORT RILEY KANSAS

**DUTY FIRST.
PEOPLE ALWAYS.
ALL ELSE FOLLOWS.**



FY22 ECONOMIC IMPACT SUMMARY

1 OCT 21 - 30 SEPT 22



U.S. ARMY

Table Of Contents

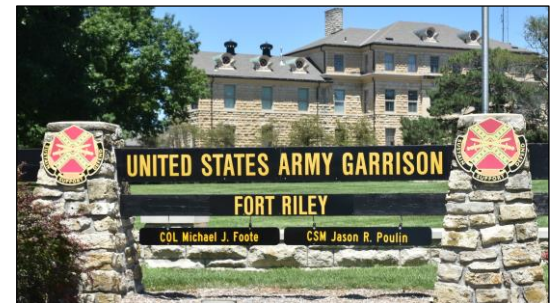
Overview – Who We Are	2
Command Group	3
Unit Information	4
Operation Victory Wellness / Big Red One Year of Family.....	6
Fort Riley Economic Impact	8
Economic Impact.....	9
Payroll	10
Service and Supply	11
Construction	12
Veteran Expenditures.....	13
Education	14
Health Care	15
Population	16
Infrastructure	20
Deployment	21
Training	23
Safety	27
Housing	28
Innovative Cost Efficiencies.....	32
Community Partnerships	33
Soldier Transition.....	35
Quality of Life	37
FY22 Data Contributors.....	43

Overview – Who We Are



Department of the Army

The U.S. Army's mission is to deploy, fight and win our nation's wars by providing ready, prompt and sustained land dominance by Army forces across the full spectrum of conflict as part of the joint force.



1st Infantry Division and Fort Riley

The 1st Infantry Division and Fort Riley build and maintain combat ready forces; on order deploys these forces to conduct Decisive Action to fight and win in complex environments as members of a Joint, Inter-organizational, and Multinational (JIM) team.



Army Materiel Command

Army Materiel Command delivers logistics, sustainment and materiel readiness from the installation to the forward tactical edge to ensure globally dominant land force capabilities.



Installation Management Command

IMCOM delivers quality base support from the Strategic Support Area, enabling readiness for a globally responsive Army.

“Fort Riley - A Great Place to Live, Train, Deploy From, Come Home to and Retire”

Command Group

1st Infantry Division Command Group

Commanding General
Command Sergeant Major
Deputy Commanding General - (Support)
Deputy Commanding Officer - (Maneuver)
Chief of Staff

Major General John V. Meyer III
Command Sergeant Major Christopher L. Mullinax
Brigadier General Niave F. Knell
Colonel John B. Mountford
Colonel Brandon "Bull" Smith

Garrison Command Group

Garrison Commander
Garrison Command Sergeant Major
Deputy Garrison Commander

Colonel Michael J. Foote
Command Sergeant Major Jason R. Poulin
Mr. Steven W. Crusinberry

Major Subordinate and Tenant Commanders

1st Armored Brigade Combat Team (ABCT)
2nd Armored Brigade Combat Team (ABCT)
1st Infantry Division Sustainment Brigade
1st Infantry Division Artillery (DIVARTY)
1st Combat Aviation Brigade (CAB)
Irwin Army Community Hospital (IACH)
Dental Activity (DENTAC)
Army Field Support Battalion - Riley, 407th (AFSB)
Division HQ and HQ Battalion
10th Air Support Operations Squadron (ASOS)
97th Military Police Battalion
MICC Fort Riley – 923rd Contracting Battalion

Colonel Brian E. McCarthy
Colonel Bryan M. Harris
Colonel Ricardo D. Jones
Colonel Richard J. Ikena
Colonel Thomas J. Arriaga
Colonel Anthony D. Gray
Colonel Rachelle A. Retoma
Lieutenant Colonel Antonio C. Coffey
Lieutenant Colonel John C. Hatley
Lieutenant Colonel Roland T. McElveen
Lieutenant Colonel Andrew L. Sergent
Lieutenant Colonel Randy Garcia

Unit Information - 1st Infantry Division



Division Headquarters and Headquarters Battalion, 1st Infantry Division

The Division Headquarters and Headquarters Battalion (DHQB) consists of four Companies whose mission is to support the 1st Infantry Division.



1st Armored Brigade Combat Team, 1st Infantry Division

The 1st Armored Brigade Combat Team (ABCT) consists of: 1st Battalion, 16th Infantry Regiment; 2nd Battalion, 34th Armor Regiment; 3rd Battalion, 66th Armor Regiment; 1st Squadron, 4th Cavalry Regiment; 1st Battalion, 5th Field Artillery; 1st Brigade Engineer Battalion; and 101st Brigade Support Battalion.



2nd Armored Brigade Combat Team, 1st Infantry Division

The 2nd Armored Brigade Combat Team (ABCT) consists of: 1st Battalion, 18th Infantry Regiment; 1st Battalion, 63rd Armor Regiment; 2nd Battalion, 70th Armor Regiment; 5th Squadron, 4th Cavalry Regiment; 1st Battalion, 7th Field Artillery Regiment; 82nd Brigade Engineer Battalion; and 299th Brigade Support Battalion.



Division Artillery, 1st Infantry Division

Division Artillery (DIVARTY) provides a single proponent within 1st Inf. Div. for standardized fires certification and leader development while exemplifying effective Mission Command (Art 5.0); and supporting the seamless cross-attachment of units with common procedures and a shared understanding of the Fires warfighting capabilities.



1st Sustainment Brigade, 1st Infantry Division

The 1st Sustainment Brigade consists of: HHC, 1st Sustainment Brigade; Special Troops Battalion, 1st Sustainment Brigade; and 541st Combat Sustainment Support Battalion.



Combat Aviation Brigade, 1st Infantry Division

The Combat Aviation Brigade (CAB) consists of HHC, CAB; 1st Attack Reconnaissance Battalion, 1st Aviation Regiment; 2nd General Support Aviation Battalion, 1st Aviation Regiment; 3rd Assault Helicopter Battalion, 1st Aviation Regiment; 601st Aviation Support Battalion; and 1st Heavy Attack Reconnaissance Squadron, 6th Cavalry Regiment.

Unit Information



KS Small Market, Stand-Alone Military Medical Treatment Facility, Defense Health Agency (DHA)
Irwin Army Community Hospital (IACH) provides quality healthcare to the Soldiers, families, and retirees of the Central Flint Hills Region. The hospital operates Farrelly, Custer Hill and Aviation Health Clinics on Fort Riley.



Midwest Region Network Enterprise Center (RNEC)
The RNEC mission is to build, and sustain, a community of Command, Control, Communications, Computers, and Information Management (C4IM) service providers in the Midwest Region who are dedicated, innovative and adaptive, with positive customer relationships.



10th Air Support Operations Squadron (10 ASOS), USAF
The 10th Air Support Operations Squadron organizes, trains, and equips combat ready Airmen to provide Liaison, TACP command and control, and precision strike to the First Infantry Division and the Joint Force.



Army Field Support Battalion - Riley (AFSBn-Riley), 407th AFSB
The AFSBn-Riley synchronizes, integrates and delivers Readiness and Enterprise Sustainment to the 1st Infantry Division, Fort Riley Kansas Garrison, and all tenant units within its area of operations.



United States Army Garrison Command (USAG)
USAG consists of the HQ and HQ Company; Emergency Services; Family, Morale, Welfare and Recreation; Human Resources; Plans, Training, Mobilization and Security; Public Works; Equal Employment Opportunity; Garrison Safety; Plans, Analysis and Integration; Public Affairs; Resource Management; and Staff Judge Advocate.



Civilian Human Resources Agency (CHRA) Southwest Region
The CHRA Southwest provides regional oversight and support to 18 Civilian Personnel Advisory Centers with a presence in 16 states. Home to the Army Benefits Center-Civilian providing world-wide benefits services and also home to the Civilian Personnel Records Center (CIVPRC).



Mission and Installation Contracting Command (MICC)
MICC-Fort Riley and the 923rd Contracting Battalion contracting activities provide 1st Infantry Division and the Fort Riley Garrison contracting solutions and expert acquisition business advice. On order, provides Operational Contracting Support IOT enable Army Unified Land Operations.



Army Military Pay Office (DFAS)
AMPO delivers and administers superior financial services in an efficient, effective and timely manner for Fort Riley Soldiers and their families while setting the standards in customer service as leaders throughout all of the Defense Finance Accounting System.

Operation Victory Wellness

OPERATION VICTORY WELLNESS (OVW) is the 1st Infantry Division's program to make individuals stronger, more resilient and increase the cohesion of the team. Enhanced operational readiness of individuals and units through increased strength and resilience of families across the Five Dimensions of Strength (emotional, family, physical, spiritual, and social) from Operation Victory Wellness.



There are four important components to Operation Victory Wellness

- Wellness Mornings** — Improve the human dimension of individual strength.
- Foundational Days** — Increase the bond between one another.
- Action Week** — Build resiliency and unit cohesion.
- Wellness Checks** — Counseling for everyone.

Big Red One Year of Family

The Big Red One Year of Family (BYoF) was a Division led, yearlong campaign focused on building strength and resilience of Families, educating Families about available resources, and showing appreciation for their continued support. The goal of BYoF was to strengthen 1ID Families and Soldiers to increase Family resilience aligned with the five Dimensions of Strength, honoring and recognizing the important foundational role our Families play in our organization's success. BYoF was a part of Victory Wellness, as Victory Wellness is our ongoing program to achieve success...
All Else Follows!

FAMILY FITNESS is about Army Families being ready and able to cope with the challenges posed by the stress of military life. Families that are resilient, supportive, and loving can effectively thrive through the roller coaster that is Army life.

FAMILY STRENGTH

PEOPLE ALWAYS — ALL ELSE FOLLOWS

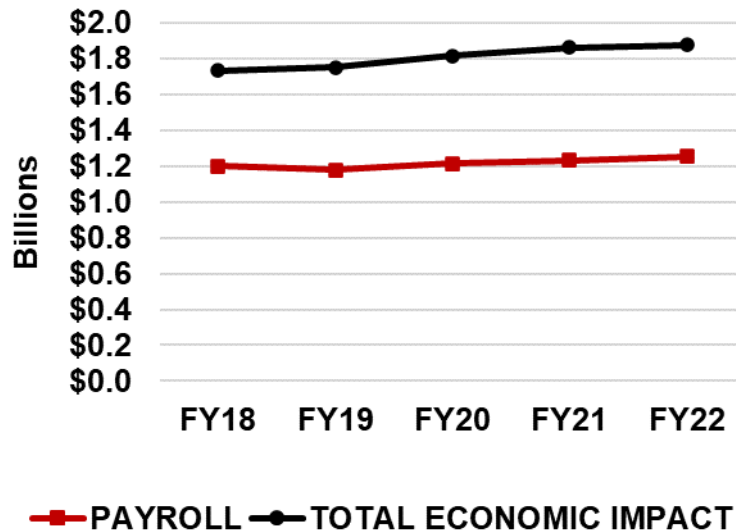
1st Infantry Division and Fort Riley conducted the Big Red One Year of Family program during 2022 to build the strength and resilience of our Families, educate Families on resources available on the installation, and show appreciation for the Families of the Division.



- Signature Events** — Monthly and Quarterly events highlighting tenets of the program: 30+ Signature Events
- Highlighted Events** — Family oriented events throughout the year to show appreciation, build resilience, and educate families: 70+ Highlighted Events
- Family Recognition** — Families recognized and honored for their display of strength and resiliency: 56 Families Recognized (14 each quarter)

Fort Riley Economic Impact

Fort Riley's direct* fiscal year (FY) 2022 economic impact was \$1.8B.



* Direct = No economic multipliers applied.

Changes and increases in economic impact totals from previous Fort Riley economic reports are a result of modifications and improvements in data collection sources.

Payroll	FY 18	\$1,201,322,158
Contracts: Supply and Service		\$184,821,748
Construction		\$40,951,262
VA Expenditures		\$205,929,000
Education		\$17,900,223
Health Care		\$81,940,969
TOTAL ECONOMIC IMPACT		\$1,732,865,360
Payroll	FY 19	\$1,177,539,103
Contracts: Supply and Service		\$154,587,440
Construction		\$71,975,453
VA Expenditures		\$208,217,000
Education		\$53,212,228
Health Care		\$86,316,820
TOTAL ECONOMIC IMPACT		\$1,751,848,044
Payroll	FY 20	\$1,213,173,027
Contracts: Supply and Service		\$193,725,857
Construction		\$69,149,755
VA Expenditures		\$233,107,000
Education		\$18,252,984
Health Care		\$87,485,500
TOTAL ECONOMIC IMPACT		\$1,814,894,123
Payroll	FY 21	\$1,233,834,108
Contracts: Supply and Service		\$186,388,809
Construction		\$70,306,292
VA Expenditures		\$249,732,355
Education		\$30,488,983
Health Care		\$91,498,377
TOTAL ECONOMIC IMPACT		\$1,862,248,924
Payroll	FY 22	\$1,253,407,932
Contracts: Supply and Service		\$189,043,001
Construction		\$73,153,408
VA Expenditures		\$261,320,046
Education		\$15,022,074
Health Care		\$85,019,804
TOTAL ECONOMIC IMPACT		\$1,876,966,265

Economic Impact

Fort Riley utilizes innovative solutions and creative best practices to mitigate funding/manning shortfalls, ensuring a high state of **READINESS** in the Strategic Support Area of the 1st Infantry Division (FORT RILEY).

Payroll	\$1,253,407,932
Contracts - Service and Supply	\$189,043,001
Construction	\$73,153,408
Veteran Expenditures	\$261,320,046
Education: Federal Impact Aid	\$15,022,074
Health Care	\$85,019,804

Total Direct Economic Impact

\$1,876,966,265

With a generally accepted Congressional Budget Office (CBO) economic multiplier of \$2.2 per \$1 of direct expenditures, Fort Riley's full economic impact would be more than:

\$4,129,325,784

Economic Impact – Payroll

Fort Riley is the largest employer in the Central Flint Hills Region. Additional government agencies and Kansas State University are also primary employers in the region.

Military Base Pay*	\$868,603,788
Federal Civil Service Civilian Pay	\$224,416,946
Non-Appropriated Fund Civilian Pay**	\$11,601,387
Non-Federal Civilian Pay**	\$25,265,472
Retiree Annuities (DOD Office of the Actuary)	\$123,520,339
Total Payroll	\$1,253,407,932



* Military payroll provided by Army Military Pay Office; Federal civil service civilian pay information provided by RMO and G8.

** Non-appropriated fund civilian pay provided by DFMWR; Non-federal civilian pay information compiled by PAIO.

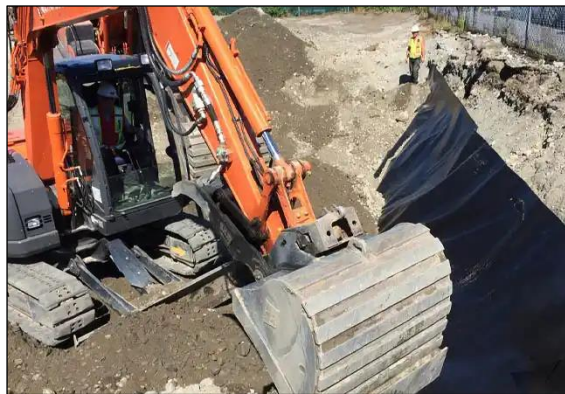
Economic Impact - Service and Supplies

Contracts: Service and Supply

Mission & Installation Contracting Command (MICC)		\$19,828,164
Energy Savings Performance Contract (ESPC)		\$7,570,063
Non-MICC Appropriated Funds (APF)		
- Supplies	\$58,953,817	
- Services	<u>\$101,307,682</u>	
Total Appropriated Funds		\$160,261,499
Non-MICC Non-Appropriated Funds (NAF)		
- Supplies	\$985,705	
- Services	<u>\$397,570</u>	
Total Non-Appropriated Funds		\$1,383,275

Total Contracts/Supplies/Services

\$189,043,001



Economic Impact – Construction

Appropriated Funds (AF):

Army Corps of Engineers Military Construction, payments made	\$55,867,000
- Army Corps of Engineers contracts awarded	\$183,279,031
- Army Corps of Engineers contracts completed	\$41,071,044
Non-Army Corps of Engineers contracts	\$16,539,723

Non-Appropriated Funds (NAF):

NAF capital purchase & minor construction	\$746,685
---	------------------

Total Current Year Payments

\$73,153,408



AF contract data provided by the U.S. Army Corps of Engineers; NAF contract data provided by DFMWR; Non-Army COE contract data provided by MICC.

Economic Impact - Veteran Expenditures*



Compensation and pension expenditures include dollars for the following programs: veterans' compensation for service-connected disabilities; dependency and indemnity compensation for service-connected deaths; veterans' pension for nonservice-connected disabilities; and burial and other benefits to veterans and their survivors.

Medical Care expenditures include dollars for medical services, medical administration, facility maintenance, educational support, research support, and other overhead items. Medical care expenditures do not include dollars for construction or other non-medical support.

	<u>Compensation & Pension</u>	<u>Education & Vocational Rehabilitation/ Employment</u>	<u>Insurance & Indemnities</u>	<u>Medical Care</u>	<u>Total Expenditures</u>
Clay County	\$6,752,756	\$469,641	\$402	\$2,814,772	\$10,037,571
Dickinson County	\$16,434,042	\$1,142,595	\$75,369	\$8,580,571	\$26,232,577
Geary County	\$60,054,864	\$10,412,705	\$220,097	\$22,703,617	\$93,391,283
Morris County	\$3,213,277	\$110,254	\$33,822	\$1,992,168	\$5,349,521
Pottawatomie County	\$8,678,813	\$964,793	\$77,547	\$7,699,296	\$17,420,449
Riley County	\$43,193,400	\$9,098,771	\$348,281	\$16,268,613	\$68,909,065
Saline County	\$15,835,507	\$2,131,502	\$249,727	\$15,904,231	\$34,120,967
Wabaunsee County	\$2,950,699	\$188,127	\$6,946	\$2,712,841	\$5,858,613
Total	\$157,113,358	\$24,518,388	\$1,012,191	\$78,676,109	\$261,320,046

Regional Veteran population and expenditure data provided by the Department of Veterans Affairs.

* Figures are as of 30SEP2021. FY22 data will be available in AUG2023.

Economic Impact – Education

Dependents of Soldiers and federal employees account for 5,527 students or 19% of the total student population in the Central Flint Hills Region.



Payments from Federal Impact Aid

USD 475 (Geary County)	4,208 Students	\$14,807,939
USD 383 (Manhattan-Ogden)	576 Students	\$114,120
Other Districts	743 Students	\$100,015

Total Payments from Federal Impact Aid

\$15,022,074

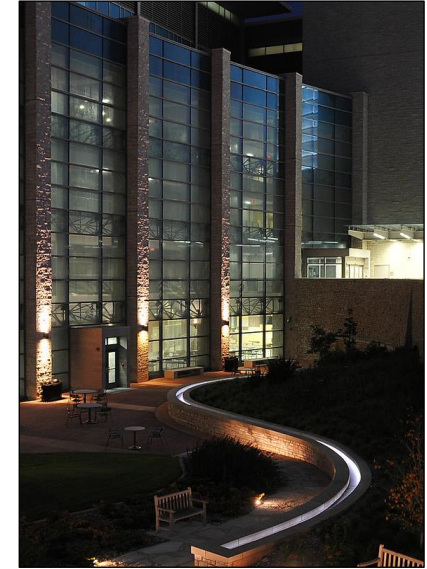


Federal impact aid data provided by DFMWR CYS School Liaison Officer.

Economic Impact – Health Care

Irwin Army Community Hospital (IACH) is a 47-bed hospital designed with the latest medical engineering technology to deliver the best care to our Big Red One Soldiers and mission partners, their Families and our Retirees.

IACH serves over 43,525 beneficiaries every year. On a typical day, it sees 1,638 clinical patients, 65 ER visits, fills 1,429 prescriptions, runs 1,101 laboratory procedures, 169 vaccinations, performs 7 surgical cases, and delivers 2 babies.



Outsourced (off-post) Patient Care

	<u>Number of Patients</u>	<u>Amount Paid</u>
Total outpatient care	40,425	\$46,915,761
Total inpatient care	1,096	\$11,048,283
Total outsourced patient care	41,521	\$ 57,964,044

Health Care

Hospital expenses (minus construction, payroll, contracts)	\$27,055,760
Outsourced patient care (see above)	\$57,964,044
Total health care expenses	\$85,019,804

Health care data provided by DHA, RM Division and includes Dental Activities.

Population

Population data reflects the surrounding Flint Hills Region including Clay, Dickinson, Geary, Morris, Pottawatomie, Riley, Saline and Wabaunsee Counties.



Military* (Army)		14,738
Officers	1,526	
Warrant Officers	443	
Enlisted	12,769	
Military (Air Force)		131
Family Members		15,327
On Post	8,593	
Off Post	6,734	
Veterans**		27,342
Retirees***	4,751	
Civilian Employees (including Contractors)		5,145
Total Population		62,683

* Military population data provided by G-1 Strength Management; family member population data provided by DHA – DEERS.

** Veteran/retiree data provided by the Department of Veterans Affairs; civilian employee population data provided by CPAC and PAIO.

***Retiree population was historically double counted with Veteran data and corrected in FY22

Population - Civilian Workforce

Department of the Army Appropriated Fund Employees	2,332
Other Federal Employees	400
Non-Appropriated Fund Employees	387
Other Civilian Employees (including Contractors)*	2,026
Total Civilian Employees	5,145

* Other Civilian Employee Breakdown (including Contractors)

742 nd Military Intelligence Bn	5	DHR – ID Card Section	2
10th ASOS, USAF	4	DFMWR	29
Army Military Pay Office (AMPO)	8	Division G2	1
Army & Air Force Exchange Service (AAFES)	231	Division G4	130
AAFES Concessionaires	37	DPW - Energy and Conservation Branch	6
Advanced Turbine Engine Army Maintenance	103	DPW - Environmental Division	3
Armed Forces Bank, N.A	5	DPTMS, Various Training Sites	122
Army Field Support Brigade (AFSBn)	256	Equipment Concentration Site #33	3
Aviation Field Maintenance Activities	42	Envision	4
Navy Federal Credit Union	8	InterContinental Hotel Groups (IHG)	26
Camp Funston KSARNG	10	DHA (IACH) / DENTAC	145
Commissary (DeCA)	30	Skookum	56
Corvias	171	United Services Organization (USO)	6
DHR - Education Services	10	USD 475 On-Post Personnel	538
DHR - SRP/TAP	22	Vyve Broadband	7
DHR – In/Out Processing	6		
		Total Other Civilian Employees	2,026

* Contractor numbers do not include many service contractors who work less than full time or whose physical office location is other than Fort Riley, such as landscaping, maintenance, custodial, etc.

Population – Military Retirees



Military retirement population numbers include members of the Army, Navy, Marine Corps, Air Force and Coast Guard.

Expenditures include non-disability retired pay, disability retired pay, retired pay for reserve service, survivor annuity programs and special compensation programs for certain disabled retirees.



	<u>Population</u>	<u>Expenditures</u>
Clay County	237	\$5,951,772
Dickinson County	508	\$12,415,504
Geary County	1,787	\$42,815,054
Morris County	95	\$2,205,700
Pottawatomie County	256	\$7,094,989
Riley County	1,374	\$41,461,554
Saline County	370	\$8,685,069
Wabaunsee County	124	\$2,890,697
Total	4,751	\$123,520,339

Regional retiree population data provided by DOD Office of the Actuary.

Population - Veterans *

Population data includes non-retired veterans registered with and eligible for benefits from the Department of Veterans Affairs.

VA expenditures include compensation and pension; education and vocational rehabilitation and employment; insurance and indemnities; and medical expenditures.

	<u>Population</u>	<u>Expenditures</u>
Clay County	811	\$10,037,571
Dickinson County	1,905	\$26,232,577
Geary County	10,761	\$93,391,283
Morris County	510	\$5,349,521
Pottawatomie County	1,595	\$17,420,449
Riley County	7,201	\$68,909,065
Saline County	4,047	\$34,120,967
Wabaunsee County	513	\$5,858,613
Total	27,343	\$261,320,046

- Figures above are as of 30SEP2021.
- FY22 data will be available in Aug 2023.



* See page 13 for additional Veteran Expenditure Data.

Regional veteran population and expenditure data provided by the Department of Veterans Affairs.

Infrastructure

Fort Riley has access to 34,000 additional training acres (prairie land) at the Great Plains Joint Training Center in Salina, Kansas, 60 miles away. This area is the largest inert bombing range east of the Rockies and provides exceptional joint training opportunities for heavy forces' collective, distributed, Joint (10th Air Support Operations Squadron - JTACS/FOs and Joint Fires), Inter-organizational, and Multinational (JIM) training in coordination with our Kansas National Guard partners.

	<u>Acreage</u>	<u>% Total Acreage</u>
Training Area	69,422	76%
Impact Area	13,390	15%
Maneuver Lane (Fixed Gunnery Ranges)	6,365	7%
Major Water Bodies (Floating Bridge Site)	262	0%
Military Ranges	2,185	2%
Total Acreage for Training	91,624	100%

Total Installation Acreage = 101,732.91

Buildings excluding Housing

- Number of Buildings	910
- Historical Buildings:	156
- Square Footage w/o housing	12,013,386.33

Transportation Network (Miles)

- Paved (Cantonment Area)	155
- Unpaved/Dirt (Training Area)	180
- Tank Trails	169
- Range Roads	148
- Railroad Tracks	16

Total Miles **668**



Deployment – Rail Yard

When driving past the rail tracks in Camp Funston, it's not uncommon to see a red locomotive pulling cars along the tracks for several hours a day and multiple weeks at a time. Army Field Support Battalion (AFSBn)-Riley railhead staff operate as a two-man team to ensure the equipment brigades use and need is available to make it safely to their training installation or port destination for each deployment.

- 14 loading spurs, 6 double wide end loading ramps, 2 single wide loading ramps and 3 side loading ramps
- Light banks:
 - 12 stadium lights in main rail yard (1 ea. Northside, 1 ea. Southside, 5 ea. Eastside, and 5 ea. Westside yards)
 - 3 stadium lights in east rail yard (1 ea. Eastside, 1 ea. Southside, and 1 ea. on the Westside)
 - 21 half high lights in east rail yard (5 ea. of Eastside, 5 ea. in the center, 10 ea. on Westside) These four spurs have the lights that illuminate at car deck height to assist tie down of vehicles after dark
 - 10 stadium lights along the Southside of the interchange yard.
- Reinforced docks with shock absorbers – three concrete docks for loading equipment that will be shipped by truck, two on Custer Hill and one at Camp Funston, and three portable docks for loading equipment that will be shipped by truck at Camp Funston
- Movement Control Center and Control Tower
- 3 engines to move train to loading facilities
- Weighing facilities
- Side Rail holds 455 ea. 89' cars



Deployment – Airfields

Fort Riley's robust deployment capability is supported by 3 local airfields available for simultaneous use.

Manhattan Regional Airport features a 460,000 sq. ft. Army Deployment Ramp which allows Fort Riley to use the facility as a Rapid Deployment Facility for a Quick Reaction Force (QRF) mission in support of Homeland Defense. The apron area has been designed to allow two C-17 aircraft to park simultaneously.

- Primary commercial service airport – more than 70,000 enplanements per year with daily regional jet service provided by American Airlines to Dallas Fort Worth (DFW) and Chicago O'Hare (ORD).
- Two runways – The primary runway is 7,000' x 150' and the crosswind is 5,000' x 75'. Instrument approaches into the primary runway afford flying in inclement weather as well as for training. Class D airspace is controlled by an on-site air traffic control tower.
- In FY21 Manhattan Regional Airport was awarded a \$5.9 million grant from the Defense Community Infrastructure Program (DCIP) to assist with the cost of the Runway Reconstruction project.
- Runway construction started in September 2022 with a completion date of August 31, 2023.



Salina Regional Airport serves as a forward operating location for military aviation units deploying to Saline County and the Great Plains Joint Training Center operated by the Kansas National Guard.

- Primary runway is 12,300 feet long
- Crosswind runway is 6,500 feet long
- 2.7 million sq. ft. of ramp space
- Excess of 10,000 sq. ft. of hangar space
- Primary runway, taxiway and aircraft parking apron can support all USAF transport aircraft in the AMC fleet



Topeka Regional Airport (Forbes Field) has two runways and more than 2 million square feet apron space available for transient military, general aviation and commercial aircraft.

- Primary runway is in excess of 12,800 feet long
- Crosswind runway is 7,000 feet long



Training

Fort Riley completed a \$13M Douthit Gunnery Complex Life Cycle Range upgrade, included operating system hardware, software, cameras, instrumentation sets, and communication systems. Last Douthit range upgrade conducted in FY17. 48 Integrated Player Units (IPU) sets fielded, allows for simultaneous gunnery for a Company Team. Hardware is interchangeable between the ranges, significantly increased unit throughput to allow us to train M1 Abrams, M2 Bradley and AH64 crews quicker, more efficiently.

Tracked Vehicles:

Tanks	174
Bradleys	274
Other	507

Wheeled Vehicles:

3,367

Aircraft:

Rotary Wing	112
Unmanned Aerial Systems	45

Total Army Training Partners*

1-113 IN (IA ARNG)	KSU ROTC
1-161 FA Bn (KS ARNG)	1-133 IN (IA ARNG)
2-130 FA Bn (KS ARNG)	1-113 CAV (IA ARNG)
891 EN Bn (KS ARNG)	1-168 IN (IA ARNG)
45 IBCT (OK ARNG)	1-134 CAV (NE ARNG)
5 th EN (AD FLWMO)	1-635 AR (KS ARNG)

*List Does Not Include All Units That Train on Fort Riley

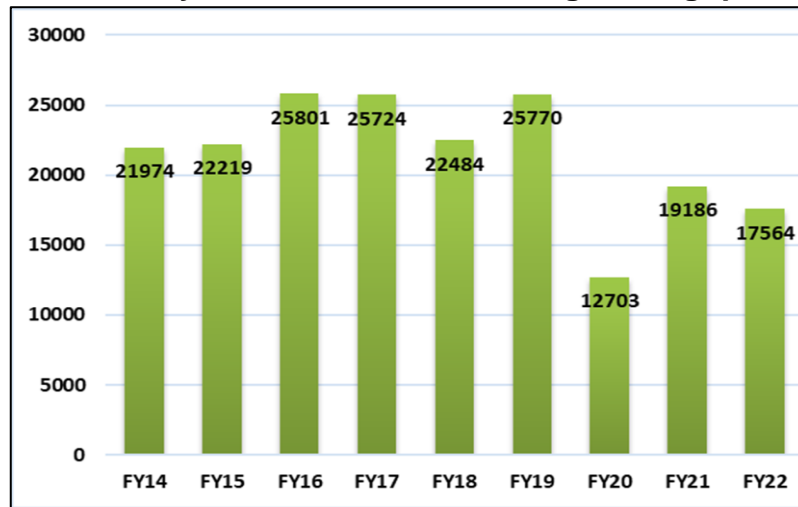


Training data provided by DPTMS and 11D G4.

Training - Regional and Joint

Fort Riley's training environment consists of a complete modern, state-of-the-art, full spectrum training capability (Live, Virtual, Constructive, Gaming in the Integrated Training Environment) which supports "Total Army," Joint, Inter-organization, and Multinational (JIM) training for the Midwest, our state, regional and local partners.

Fort Riley Annual Off-Post Training Throughput



Fort Riley boasts a secondary 200 meter long, Floating Bridge Site (FBS) (at Williams Drain - Training Area 64), which validates FRKS ability to support future Multi-Role Bridge Company (MRBC) stationing actions and conduct FBS operations for 1ID Organic or Total Army Partner Units.

Fort Riley also has a dedicated Expert Infantry Badge (EIB) / Expert Field Medical Badge (EFMB) / Expert Soldier Badge (ESB) site validating FRKS ability to conduct EIB/EFMB/ESB operations at a dedicated location, codifying FRKS as a premier training installation and increasing the Mission Readiness of 1ID and Total Army Partner Units

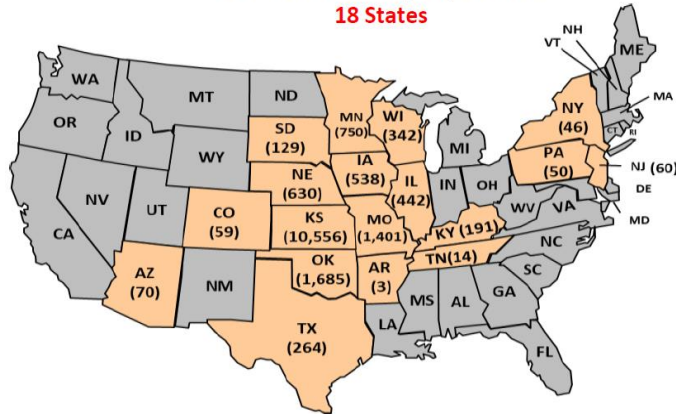


Training data provided by DPTMS.

Training - Regional and Joint

FY22 Training by State

18 States

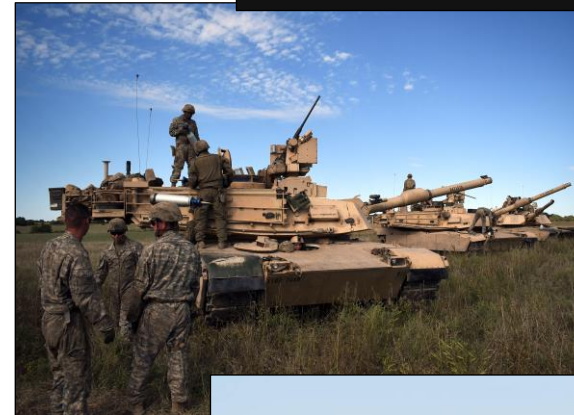


Note: Does not include Active Component Brigade Combat Teams stationed on Fort Riley

The Camp Funston Reserve Component Training Complex consists of:

- 4 billets with a total bed space of 1,344
- 1 assembly/feeding area that seats 164
- Battalion administration areas
- 2 motor pools
- 6 relocatable arms rooms

In FY22, Fort Riley was selected by Headquarters Department of the Army as an Inactive Primary Mobilization Force Generation Installation (MFGI). As an MFGI, Fort Riley is ready and prepared to mobilize Reserve Component units in support of worldwide contingency operations.



Training data provided by DPTMS.

Training - Ranges

Range 1	MRF/Qualification/Night/Field Fire	Training Area 16	BDE Staging Area
Range 1A, Range 3A	Zero Range	TLC-1 & TLC-2	Team Live-Fire Course
Range 2	Combat Pistol Qual Range	MFP-4, MFP-6	Mortar Firing Point
Range 3	MRF/Qualification/Night/Field Fire	MFP-14	Mortar Firing Point
Range 4	Grenadier Gunnery, 12-Lane Zero Range & Privately Owned Weapons/6 Lane; M203 Qual	Combat Trail	EOD- Equip Training
Range 5	Sniper Range- Familiarization	OP-C, OP-E	Observation Point for Mortar or Artillery Fire
Range 6	Zero Range, Sniper Range, Reflex Fire	UC-0, UC-1, UC-2, UC-3, UC-4, UC-5, UC-6	Urban Cluster/Combat in the City
Range 7	Multipurpose Machinegun/Zero Range		
Range 7A	Familiarization Range	Afghan Village	Urban Cluster-Largest Wall Town
Ranges 8,15,17,19,27,51	Inactive	Obstacle Course	Individual Phy. Fitness Confidence Builder
Range 9	Machine Gun Fam/Zero/SRT	Rappel Tower	Rappel Tower
Range 10	ISBC Infantry Squad Battle Course	FLRC	Field Leaders Reaction Course
Range 16	Emergency Ordnance Disposal Training	CACTF	Combined Arms Collective Training Facility
Gunnery South	Scout Recce	Offense/Defense Building	Offense/Defense Building
Range 25	Hand Grenade Qualification and Live-Fire	Mock Airfield	Mock Airfield
Range 29	MK 19 Live-Fire//AT-4/M320/203	MHSC	Mortar Hip Shoot Course
Range 34	Skeet/Trap for DFMWR	KDR	Known Distance Range
Range 52	Demolitions & Breach Trainer	QTR MRF	Qualification Training - Modified Record Fire
QTR MPMG	Qual- Machine Gun/MK 19	QTR Sniper	Qualification Training - Range Sniper
SAC	Squad Assault Course	FLS	Field Landing Strip
Range 54	Engineer Qualification Tables III-VI	QTR CPQC	Qualification Training - Combat Pistol
Douthit Complex - DMPRC & DMPTR	Digital, Multi-purpose Range Complex/ Stationary Gunnery/Aerial Gunnery	HERC NAV DZ	Drop Zone
Douthit Complex-Zero	Zero Complex	Timber Creek DZ	Drop Zone
Douthit Screening Range	Screening Range/ Sync Ramp	Trench Complex	TA-16 Trench Training
Shoot House 1	Live-Fire Shoot House	FBS #1	Floating Bridge Site- Madison Creek
Shoot House 5	Live-Fire Shoot House/ Zero Range	FBS #2	Floating Bridge Site- Williams Drain
Range 53	IPBC Infantry Squad/Platoon Battle Course	Training Area 12 & 24	Land Navigation

Safety

Through the efforts of the Soldiers, Department of the Army civilians and other Fort Riley community members, USAG Fort Riley reduced the total number of accidents during FY 22.

	<u>MEDICAL COST</u>	<u>COMPENSATION COST</u>	<u>TOTAL</u>
2018	\$50,733.00	\$153,337.06	\$204,070.06
2019	\$45,675.72	\$136,698.18	\$182,373.90
2020	\$47,582.08	\$133,318.79	\$180,900.87
2021	\$55,564.37	\$68,197.55	\$123,761.92
2022	\$38,308.93	\$71,566.74	\$109,875.67



Cost-Conscious, Safe and Efficient Installation

- FECA cost is a significant data point for being selected for safety achievements
- Fort Riley continues to have the lowest workers' compensation cost in IMCOM Readiness (like installations) CBY17 - CBY22. With Fort Riley being below the next like installation by \$352K.
- As of 5 October 2022, Fort Riley has had no Class A or B accidents in the past 1501 days.
- USAG FR was awarded the FY21 Secretary of the Army/Chief of Staff Army (SA/CSA) Exceptional Organization Safety Award

FECA data provided by the Garrison Safety Office.

Housing - On-Post Residential

Fort Riley's family housing is managed by Corvias in conjunction with the Army Housing Office. Corvias is an Army partner and a private company. Fort Riley's Leaders and Corvias share common objectives such as, providing a safe, quality home, excellent customer service and reliable/timely maintenance to our Soldiers and their families.



Corvias

Family Quarters	3,826
- Officer	441
- Enlisted	3,385
Total Square Footage	6,566,253
Community Centers	5
Neighborhood Pools	4



Housing data provided by DPW and Corvias.

Basic Allowance for Housing

The Basic Allowance for Housing (BAH) is a U.S.-based allowance prescribed by geographic duty location, pay grade, and dependency status. It provides uniformed service members (SM) equitable housing compensation based on housing costs in local civilian housing markets within the United States when government quarters are not provided.



Military BAH payroll provided by Army Military Pay Office.

Military Service Grade	Average # of SMs Collecting BAH w/ Dependents (non-barracks SM)	BAH Paid to SMs Collecting BAH w/ Dependents (non-barracks SM)
E1-E4	2,989	\$38,762,307
E5-E6	2,908	\$42,106,410
E7-E9	1,046	\$17,661,162
O1-O2	668	\$9,105,852
O3-O4	819	\$14,704,023
O5-O8	119	\$2,639,751
W1-W2	307	\$5,119,182
W3-W5	141	\$2,552,967
TOTAL	8,997	\$132,651,654

Fort Riley's BAH rate is among the lowest among Division-level installations, making it cost effective and fiscally beneficial to the DOD and Army.

BAH totals include SMs living both off post and in Corvias on-post family housing.

Housing - Army Barracks Management Program

Army Barracks Management Program (ABMP) is part of the Army plan to improve the quality of life for single Soldiers and to standardize the management of barracks Army-wide. Goals of the program include improving barracks utilization, managing vacant barracks space during deployment, reducing maintenance response time, decreasing building damages and extending the life of the facilities.



- 6,200+ spaces managed at company level
- 66 buildings
- 9 Soldier community buildings
- Footprints down to company level
- Basic repair & upkeep performed at company level
- Sustainment and modernization phased out to 2030
- Soldier accountability and responsibility
- Operation Victory Single Soldier Quality of Life, a Senior Commander Directive to add emphasis on barracks to improve life, health, safety, and quality of life for our Single Soldiers residing in the barracks.
- Fort Riley competed for and received just under \$114M in funding for FY19 & 20 & 21 (\$37.8 M funded in FY19 for 3 barracks, \$56.9M in FY20 for 4 barracks, \$18.5M in FY21 for 1 barrack) to renovate and upgrade.
- 3 Barracks from FY19 funding completed in FY22 with the additional 5 currently under renovations.
- Fort Riley currently requesting \$100M for an additional 3 barracks to support Army approved stationing actions beginning in FY24

Housing – Temporary Lodging / Hotel

Transitional Soldiers, families and guests of Fort Riley have the option of using the on-post hotel – InterContinental Hotels Group (IHG) Candlewood Suites.

Key Facility Highlights:

Guest Houses	3
Special Needs / Accessible Room Suites	9
Distinguished Visitors (DVQ)/Rooms	9
Total Hotel Rooms	109



Service Excellence:

Service Excellence 2022 Best in Class Heartbeat Winner for Guest Satisfaction.
#1 Guest Satisfaction out of all IHG Army Hotels.



Community Contribution:

IHG Hosts the PCS socials at the hotel. It is an open-to-all event serves as an installation collaborative effort that provides a free meal (courtesy of IHG) and brings together agencies from on and off post to help transitioning service members and their families with resources and guidance. In addition, IHG sponsors MWR events and other Army related activities.

Housing data provided by DPW Housing.



Innovative Cost Efficiencies

Fort Riley’s “cost conscious culture” is reflected in the \$5.5 million dollars in validated cost savings/avoidance in FY22. In addition, Fort Riley continues to execute innovative cost savings partnerships, to include five active Intergovernmental Support Agreements (IGSAs) and over 94 formal agreements with community partners.

	<u>Cost Avoidance</u>	<u>Cost Savings</u>	<u>Revenue Generation</u>	<u>Total</u>
FY18	\$3,259,448	\$1,494,089	\$120,000	\$4,873,537
FY19	\$6,516,701	\$603,221	\$120,000	\$7,239,922
FY20	\$6,289,664	\$502,979	\$120,000	\$6,912,643
FY21	\$3,997,906	\$1,305,000	\$187,466	\$5,490,372
FY22	\$4,815,067	\$515,841	\$189,966	\$5,520,874
Total (over 5 years)	\$24,878,786	\$4,421,130	\$737,432	\$30,037,348

Hay and Crop Lease Partnership

Agricultural use of Fort Riley’s training lands occurs when and where it is compatible with the military mission.

Currently, the DPW Environmental Division manages 1,600 acres of grain-producing firebreaks and 38,000 acres leased for cool- and warm-season hay production.

- Maintains open space for military training
- Reduces potential for wildfires
- Suppresses woody plant encroachment
- Reduces expense for grounds management
- Supports regional demand for livestock feed

	Financial Benefit	Net Increase in Revenue Generation	Total Net Financial Benefit
FY18	\$325,000	\$120,000	\$445,000
FY19	\$350,000	\$120,000	\$470,000
FY20	\$350,000	\$120,000	\$470,000
FY21	\$300,000	\$187,466	\$487,466
FY22	\$350,000	\$189,966	\$539,966
Total	\$1,675,000	\$737,432	\$2,412,432

CPI data provided by PAIO.

CPI reported totals may change from previously reported data based on continual review and documentation of efficiencies being performed on the installation.

Community Partnerships – Intergovernmental Support Agreements (IGSAs)

Intergovernmental Support Agreements (IGSAs) allow Fort Riley to strengthen ties with community municipalities, the State of Kansas, and stakeholders to form mutually beneficial partnerships, improve mission readiness, and reduce costs.

Design – Build IGSA – Unified School District (USD) 475

In August 2022, Fort Riley and Unified School District (USD) 475 signed their second Intergovernmental Support Agreement which will enable Design - Build (D-B), Purchasing Cooperatives, and Indefinite Quantity Building and Infrastructure Capital Improvement, Repair and Maintenance (CIRM) Projects in a more efficient and cost-effective manner. USD 475 will manage and facilitate D-B, Purchasing Cooperatives, and Indefinite Quantity Building and Infrastructure for CIRM Projects on the installation and will work in concert with Fort Riley's DPW to ensure compliance with all applicable standards, laws, and regulations. This IGSA creates the potential to increase the number of projects yearly due to cost and time efficiencies with an estimated cost savings of ~\$4.7M annually. In addition, USD 475 will use a portion of fees received for capital improvements, improving quality of life for students and staff.



Additional Active IGSAs

- **Demolition IGSA with (USD) 475**
Signed 27 August 2021
Est. cost savings for Fort Riley: ~\$194K
- **Safety IGSA with KS Traffic Safety Resource Office (KTSRO)**
Signed 11 September 2019
Est. cost savings for Fort Riley: \$8K annually / Cost Avoidance \$20K annually
- **Archeological Site Work IGSA with KSU**
Signed 13 May 2019
Est. cost savings for Fort Riley: \$24K annually / \$120K over 5 years
- **Bulk Salt Purchasing IGSA with the City of Manhattan KS**
Signed 21 August 2018
Est. cost savings for Fort Riley: \$89K annually / \$445K over 5 years



On & Off Post Partner Organizations

On Post (Federal or DOD)	On Post (Non-federal, Non-DOD)	Off Post
<ul style="list-style-type: none"> • 10th Air Support Operations Squadron (10th ASOS, USAF) • Army Field Support Battalion - Riley (AFSBn-Riley), 407th AFSB • Army Military Pay Office (AMPO) • 84th Explosive Ordnance Battalion (EOD) • Army and Air Force Exchange Service (AAFES) • Army Benefits Center-Civilian (ABC-C) • Civilian Human Resources Agency (CHRA) • Civilian Personnel Advisory Center (CPAC) • Criminal Investigation Division (CID) • Defense Commissary Agency (DeCA) • Defense Logistics Agency (DLA) Disposition Service • Detachment 2, 3rd Combat Weather Squadron (USAF) • Kansas Army National Guard Advanced Turbine Engine Army Maintenance (ATEAM)™? • Kansas Army National Guard Maneuver and Training Equipment Site (MATES) • Medical Department Activity (MEDDAC) • Dental Activity (DENTAC) • Mission Installation Contracting Command (MICC) – Riley • Midwest Region Network Enterprise Center (RNEC) • Special Operations Recruiting Battalion • U.S. Army Communications-Electronics Command • U.S. Army Corps of Engineers • U.S. Department of Veterans Affairs • Center for Military History (2 Museums) 	<ul style="list-style-type: none"> • Adjutant General's Corp Regimental Association • American Federation of Government Employees (AFGE) Local 2324 • American Red Cross-Service to the Armed Forces • Armed Forces Bank • Barton Community College • Big Red One Chapter of the United States Field Artillery Association • Boy Scouts of America • Girl Scouts of America • Cub Scout Packs 3260 and 3660 • Catholic Women of the Chapel • Combined Scholarship Fund • Corvias (Contractual) • Drunk Driving Prevention Program • Flint Hills Signal Corps Regimental Association • Fort Riley Central Kansas Chapter of the Association of the United States Army (AUSA) • Fort Riley Spouses Club • Fort Riley Military Vehicle Club • Fort Riley Outdoorsman Group (FROG) • Friends of the Fort Riley Museum • Historical and Archaeological Society of Fort Riley (HASFR) • Intercontinental Hotels Group (IHG) (Contractual) • Military Community Youth Ministry Club • Military Police Regimental Association • Partners of the First Territorial Capital • Protestant Women of the Chapel • Sergeant Audie Murphy Club • Society of the First Infantry Division (BRO) • U.S. Department of Agriculture • U.S. Department of Veterans Affairs • USO Kansas (United Service Organization) 	<ul style="list-style-type: none"> • Airstream Renewables Inc. (TAP) • Adopt-a-School (16 USDs) • ABF Freight (TAP) • Central Kansas Military Community Foundation • Civil Air Patrol • Elected Officials • Emporia State University • Flint Hills Job Corps • Flint Hills Regional Council • Heroes MAKE America (TAP) • Home Builders Institute (TAP) • Junction City Chamber of Commerce • Junction City Military Affairs Council • Kansas Department of Transportation • Kansas State University • KANSASWORKS (TAP) • Lady Troopers • Little Apple Brigade • Manhattan Chamber of Commerce • Manhattan Military Relations Committee • Manhattan, Junction City, Ogden and Milford Lake Parks & Recreation • McConnell AFB (DoD) • National Bio and Agro-Defense Facility • Old Troopers • Region Reimagined • Regional Airports: Manhattan, KS., Salina, KS , and Topeka, KS • Ryder (TAP) • Total Army – 18 states (TAGs) • Unified School District (USD) 383 • Unified School District (USD) 475 • Union Pacific Railroad • University of Kansas
<p>Fort Riley USAG partners with 125 separate on/off post agencies to provide Integrated installation and Regional services in support of Big Red One Soldiers, Families, DACs and Retirees, making Fort Riley and the Central Flint Hills Region of Kansas a great place to Live, train, Deploy from, Come Home to and Retire!!!!</p>		

Soldier Transition

- **An average of 2,400 Soldiers transition from Fort Riley to civilian jobs annually**
- **220 (11%) of transitioning Soldiers stayed in Kansas**
- **Military Occupational Specialties translate to many civilian job skills**

Security	Network Engineer	Chaplain	Veterinarians
Engineer	Paralegal	Dental	Railway Crewmembers
Construction	Police	Nurses/Doctors	Truck Drivers
Plumber	Police Dog Handler	Orthopedics	Transportation Management
Firefighter	Financial Management	Pediatrics	Diesel Mechanics
Surveyor	Human Resources	Radiology	Electronics Repairer
Aviation Maintenance	Musician	Cardiovascular	Logistical
Air Traffic Control	Columnists	Respiratory	Recruiters
Electrician	Broadcasting	Nutrition	Water Treatment
Information Technology	Counselors	Pharmacy	Mortuary Affairs

Fort Riley Career Skills Program (CSP)

These programs allow Soldiers to attend Apprenticeship or Internships, 180 days from separation, with an honorable discharge, good standing with command and command authorization.

Program	Completion
Airstreams Renewables Inc. Tower Technician	533 Graduates
ABF Freight CDL-A	323 Graduates
Heroes MAKE America	319 Graduates
KANSASWORKS*	132 Completed
Home Builders Institute	210 Graduates



* Kansas Based



Transition Opportunities

Kansas Employment Exploration Program (KEEP) for Transitioning Service Members / TAP Participants

KEEP is a Fort Riley Transition Assistance Program (TAP) initiative designed to encourage transitioning Service Members to settle down and remain in Kansas after completing their military service. Attendees receive community tours and are introduced to employers and city leaders to discuss job opportunities, salaries, and the quality-of-life options available to them in the community.

Key highlights / mutual benefits include:

- Provides Kansas communities with skilled labor force
- Reduces unemployment among transitioning Soldiers
- Increases community veteran/veteran-retiree populations and associated economic impacts

2022 Participating Communities
KEEP Tours have once again resumed with Manhattan completing a tour in November. Currently scheduling 2023 tour with Wichita, KS.

Previous Participating Communities:

- Salina, Kansas
- Manhattan, Kansas
- McPherson, Kansas
- Wichita, Kansas
- Junction City, Kansas
- Topeka, Kansas
- Emporia, Kansas

USO Pathfinder® Transition Program

The USO Pathfinder® Transition Program is a free, one-on-one service designed to help service members and military spouses create a plan and get connected to resources they need to achieve their personal and professional goals. The program focuses on 5 core areas: employment, education, financial readiness, navigating VA benefits and mentorship.

In FY22 USO Pathfinder served 1,850 transitioning service members, military spouses and their families. USO Pathfinder offers a Network of Resources and Services in 8 core areas:

- Employment
- Education
- Family Strength & Wellness
- VA Benefits
- Financial Readiness
- Housing
- Volunteerism
- Legal



PathfinderSM
USO TRANSITIONS

Quality of Life

Army & Air Force Exchange Service (AAFES)

Did you Know? The Exchange is a lifetime benefit that provides goods and services to the military community worldwide, offering tax-free shopping and military-exclusive pricing. 100% of Exchange earnings support the military community.

Coming Soon: Panda Express & Buffalo Wild Wings at the Fort Riley Exchange.



Food Services	Other
Burger King	Post Exchange Main Store
Charley's (2)	Annexes
Starbucks (2)	Barber Shop (2)
Subway (2)	Expresses (5)
Q'doba	Furniture Store
Popeye's	Military Clothing Sales
Taco Bell	
Dunkin' Donuts /	
Baskin Robbins	
Mobile Unit	



United Services Organization (USO)

Effort / Activity	FY22 Participation
USO Programs, Events, Outreach	40,413
USO Pathfinder Outreach	2,451
USO Center Foot Traffic	35,104

Outreach includes job/career fairs, speaking engagements and briefings

Defense Commissary Agency (DeCA)

The Defense Commissary Agency operates a worldwide chain of commissaries, saving authorized patrons thousands of dollars annually on their purchases. A core military family support element, and a valued part of military pay and benefits, commissaries contribute to family readiness, enhance the quality of life for America's military and their families, and help recruit and retain the best and brightest men and women to serve their country.

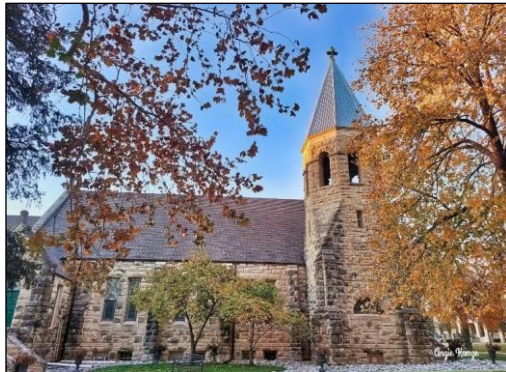


Quality of Life

Fort Riley Post Library

In FY22 the Fort Riley Post Library had 46,283 items circulated as well as numerous family activities with more than 5,305 patrons in attendance.

- Audiobooks on CD
- Fiction & Non-Fiction DVDs, includes TV shows
- Video games for multiple platforms
- Free eBook downloads
- Military Reading
- ASVAB, AFAST and GED exams
- Monthly family movie nights
- Monthly theme parties
- Computer Labs



Fort Riley Religious Services

Worship Locations

- Victory Chapel
- Historic Main Post Chapel
- Saint Mary's Chapel
- Morris Hill Chapel
- Kapaun Chapel
- Normandy Chapel
- IACH Chapel
- Outdoor Chapel



12,722 Volunteers' hours were recorded to support Fort Riley Chapel ministry for FY22.

The Volunteer hours given, equates to approximately \$318K in services rendered to support Soldier and Family Readiness, Spiritual Resiliency and the building of 1ID Soldiers and Families into a combat multiplier, enhancing combat power across the 1ID and FRKS footprint.

Quality of Life - DFMWR

Directorate of Family and Morale, Welfare and Recreation, Community Recreation Division provides great recreation programs and services that increase the quality of life for our community members and build readiness and resiliency. We became nationally accredited in 2015 and reaccredited in 2021. Our dedication to professionalism compels us to do things right, maintain strong peer relationships, keep up with trends, attract quality applicants for key positions and preserve credibility in the eyes of our community members. We are proud to help make Fort Riley the best place to live, train, deploy from, come home to and retire!



Recreation Services

- Animal Shelter and Adoption Center
- Automotive Skills Center & Car Wash
- Better Opportunities for Single Soldiers (BOSS)
- Equipment Checkout Center
- Fort Riley Skeet & Trap Range
- Hobby Studio
- Leisure Travel Services
- Outdoor Adventure Center
- Riley's Community Center
- Spare Time Interactive Entertainment
- Warrior Adventure Quest
- Warrior Zone

Quality of life data provided by DFMWR.

Sports, Fitness & Aquatics

- Craig Fitness Center (open 24/7)
- Custer Hill Aquatic Park
- Eyster Indoor Pool
- Group Fitness and Personal Training
- Intramural Sports Program
- King Field House Fitness Center
- Leonard Fitness Center
- Long Fitness Center & Training Pool - Closed
- Robinson Fitness Center
- Whitside Fitness Center (open 24/7)

For more information on MWR programs and services visit: riley.armymwr.com

Quality of Life - CYS

During FY22, CYS re-opened Warren CDC with an additional 193 spaces for the community. Warren CDC renovation made improvements which included room reconfiguration to align with current CYS requirements, improving line of sight supervision and making the CDC more effective and efficient, and upgrading all utilities to bring life, health and safety systems into compliance.



Child and Youth Services

Parent Central

- Outreach Services
- Family Child Care
- School Liaison
- Youth Sports
- SKIES Unlimited Instructional Program

1st Division Child Development Center

Custer Hill School Age Center

Custer Hill Youth Center

Forsyth Child Development Center

Forsyth East School Age Center

Warren Child Development Center

Warren East Child Development Center

Whitside Child Development Center

Whitside North Hourly Care



Family Services

Child Care Centers	5
- Capacity:	720
Certified Family Child Care Homes	4
- Capacity:	24
School Age Services	2
Youth Center	1



Quality of life data provided by DFMWR.

Quality of Life - ACS

The mission of Army Community Service (ACS) is to facilitate the commander's ability to provide comprehensive, standardized, coordinated and responsive services that support Soldiers, Army Civilians, Retirees and their Family Members regardless of geographical location and to maximize technology and resources, eliminate duplication in service delivery and measure service effectiveness.



Army Community Service (ACS)

Army Emergency Relief

Army Family Action Plan

Army Family Team Building

Army Volunteer Corps

Employment Readiness

Exceptional Family Member Program

Family Advocacy Program

Financial Readiness Program

Information and Referral

Military and Family Life Counselors

Mobilization, Deployment and Stability, Support and Operations

New Parent Support Program

Relocation Readiness

Resilience Training

Survivor Outreach Services

Victim Advocacy Program

Program Utilization in FY 2022:

- 112,652 Simple Contacts (>15 min.)
- 5,764 Extended Contacts (<15 min.)
- 71,487 Classes, briefs and sessions
- 189,903 Soldiers, Civilians, Retirees and their Family Members supported



Quality of Life - Community Service

Volunteer Services

Fort Riley Soldiers, family members and civilians contribute a vast amount of volunteer service both on and off the installation. Through coordination with the Army Volunteer Corps office, these dedicated individuals provide values-based, high-quality, cost-efficient services that contribute to resiliency and quality of life for people living in the Flint Hills Region.

	<u>Volunteer Hours</u>	<u>Cost Avoidance</u>
2018	78,779	\$2,003,349
2019	66,831	\$1,698,844
2020	35,686	\$970,659
2021	60,487	\$1,811,589
2022	58,399	\$1,749,058*
Total (over 5 years)	300,182	\$8,233,499

* Projected calculation - Final 2022 figures, available February 2023, can be obtained by calling the Army Volunteer Corps office at 785-239-9435 / 240-6250.



Army Emergency Relief (AER)

AER is the official non-profit of the U.S. Army and provides grants, interest free loans and scholarships to promote readiness and relieve financial distress of Soldiers, their Families, and Retirees.



Total assistance provided through Army Emergency Relief to Fort Riley area Active Service Members, Dependents, and Retirees in Fiscal Year 2022 - \$1,029,964.09

Volunteer data provided by DFMWR – Army Community Service.

FY22 Data Contributors

1st Infantry Division Headquarters	Equipment Concentration Site #33 (ECS)
10th Air Support Operations Squadron (10ASOS)	General Services Agency (GSA)
407th Army Field Support Battalion (AFSBn – Riley)	InterContinental Hotels Group (IHG)
Advanced Turbine Engine Army Maintenance (ATEAM)	Kansas Army National Guard (KSARNG)
American Red Cross	KS Small Market, Stand-Alone Military Medical Treatment Facility, Defense Health Agency (DHA)
Armed Forces Bank	Maneuver and Training Equipment Site (MATES)
Army and Air Force Exchange Service (AAFES)	Mission and Installation Contracting Command (MICC)
Army Military Pay Office (AMPO)	Navy Federal Credit Union
Aviation Field Maintenance Activities	Network Enterprise Center (NEC)
Center for Military History (Fort Riley Museums)	Office of Personnel Management (OPM)
CWTSatoTravel	Plans, Analysis and Integration Office (PAIO)
Civilian Personnel Advisory Center (CPAC)	Public Affairs Office (PAO)
Civilian Human Resources Agency, SW Region	Religious Support Office (RSO)
Corvias	Resource Management Office (RMO)
Defense Commissary Agency (DeCA)	Secretary to the General Staff (SGS)
Defense Counterintelligence and Security Agency	U.S. Army Corps of Engineers
Defense Human Resources Activity - Office of the Actuary	U.S. Army Foundry Program (742 nd MI BN)
Dental Activity Command (DENTAC)	U.S. Army TMDE Support Center
Detachment 2, 3rd Combat Weather Squadron	Unified School District #475
Directorate of Emergency Services (DES)	Unified School Districts within the Central Flints Hills Region
Directorate of Family, Morale, Welfare, & Recreation (DFMWR)	United Services Organization (USO)
Directorate of Human Resources (DHR)	United States Postal Service (USPS)
Directorate of Plans, Training, Mobilization, & Security (DPTMS)	VYVE Broadband
Directorate of Public Works (DPW)	Veterans Affairs (VA)
DLA Information Operations Ft Riley	Veterans Health Administration (VHA)
Envision Xpress BSC	

Fort Riley Links:

Public Website: <https://home.army.mil/riley/>

Facebook: www.facebook.com/FortRiley

Twitter: <https://twitter.com/FortRiley>

Instagram: <https://www.instagram.com/fortrileypao/>



“We Are The Army’s Home – Serving the Rugged Professionals of the Big Red One and Fort Riley”



Fort Riley – An Award-Winning Installation:

2022 SECARMY Energy and Water Management Award (three consecutive years)

2021 Chief of Staff of the Army Award of Excellence in Legal Assistance

2021 Secretary of the Army/Chief of Staff Army (SA/CSA) Exceptional Organization Safety Award

2021 Army Community Partnership Award

2021 U.S. Army Safety Excellence Streamer

2021 Ten Department of the Army Safety Risk Management Awards

2020 Twenty-two Kansas Press Association Awards

2020 National Gold Medal Plaque Award for Excellence in Park and Recreation Management

2020 Child & Youth Services Award for Excellence

2020 SECARMY Exceptional Organization Award of Excellence in Safety (received 5 out of last 7 years)

2019 Army Community of Excellence Bronze Award Recipient

2019 Eight Kansas Press Association Awards

“Fort Riley – A Great Place to Live, Train, Deploy From, Come Home To, and Retire”





Prepared by:

**United States Army Garrison - Fort Riley
Plans, Analysis, and Integration Office**

785-240-0586 / DSN 520-0586