

CiCo Park Improvements

City Commission Work Session

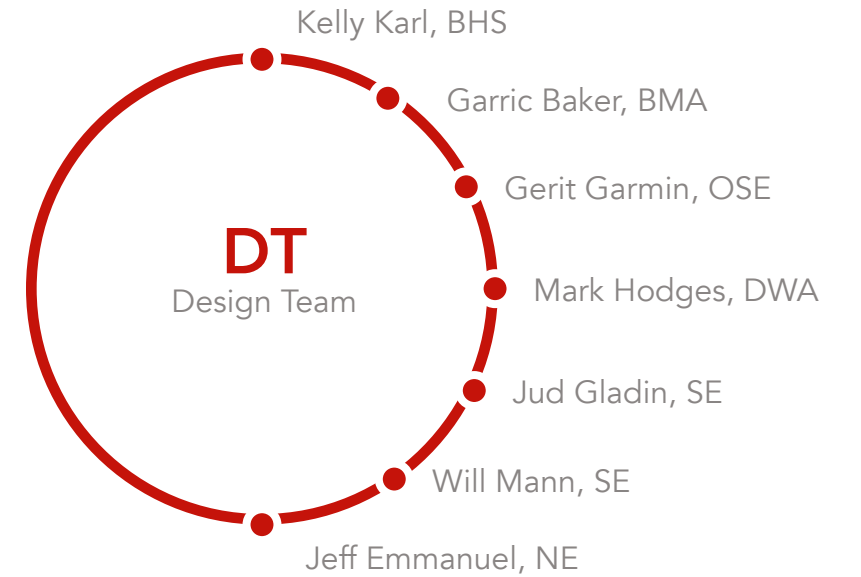
March 26, 2024

City Hall, 1101 Poyntz Avenue, Manhattan, Kansas 66502

1. Introductions & Background
2. Capacity
3. Economy
4. Priority
5. Safety
6. Timeline
7. Questions & Discussion

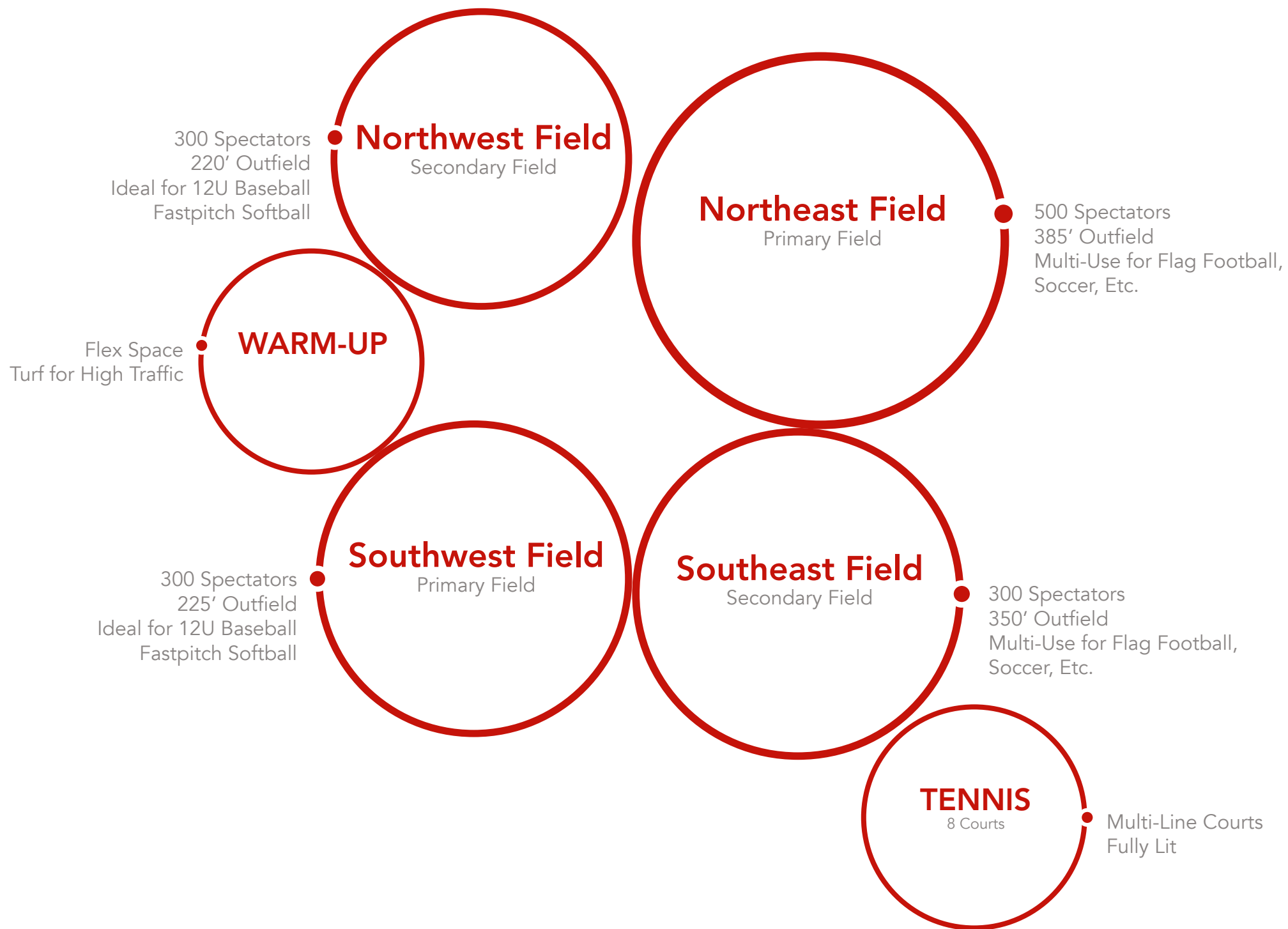
Introductions & Background

-  USD 383
-  Riley County
-  Stakeholders
-  Intergovernmental Meetings
-  2021 International Building Code
-  2010 Americans with Disabilities Act (ADA)
-  United States Tennis Association (USTA)
-  Kansas High School Activities Association (KSHSAA)



-  Participant
-  Regulator

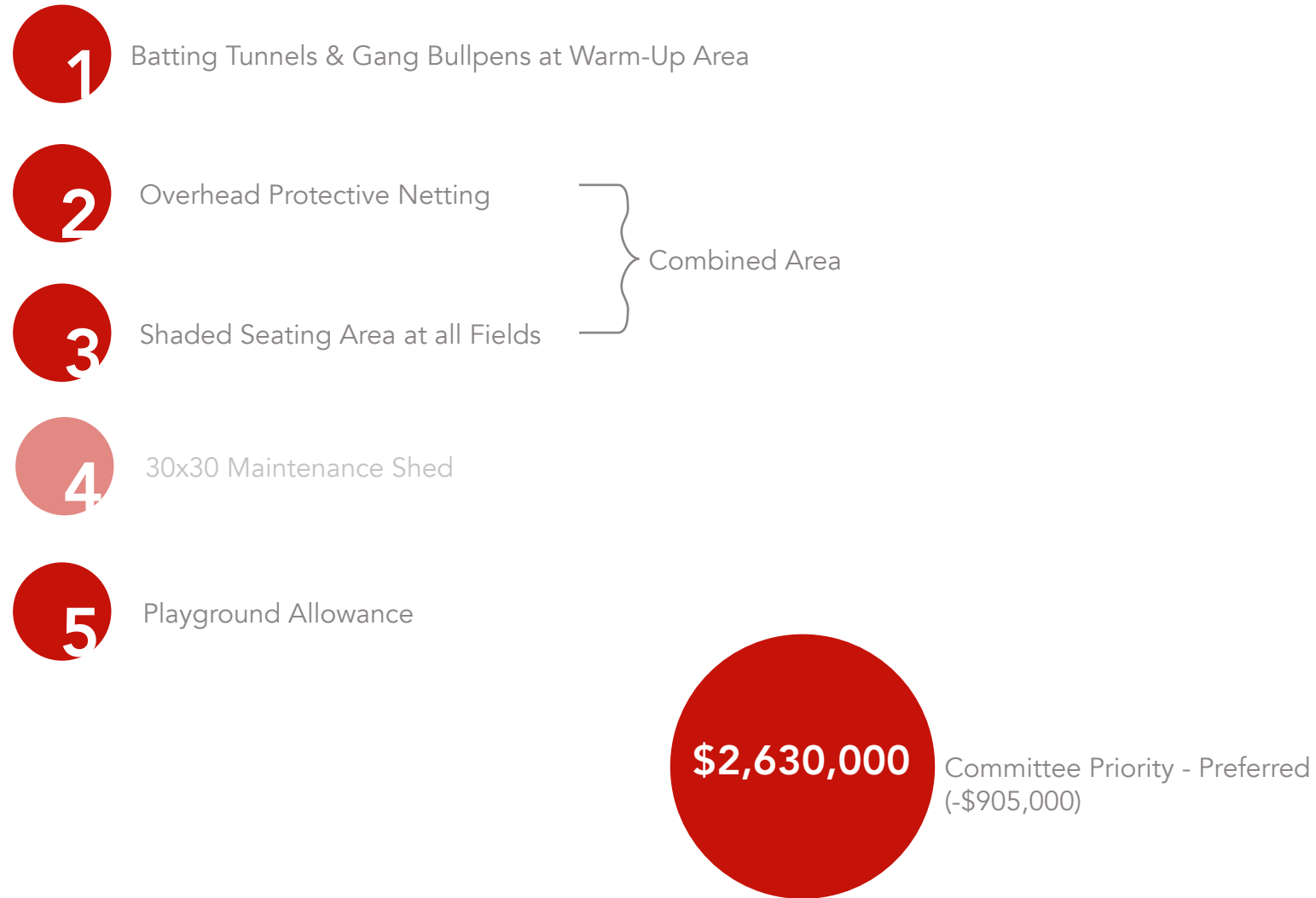
Capacity



Economy



Priorities

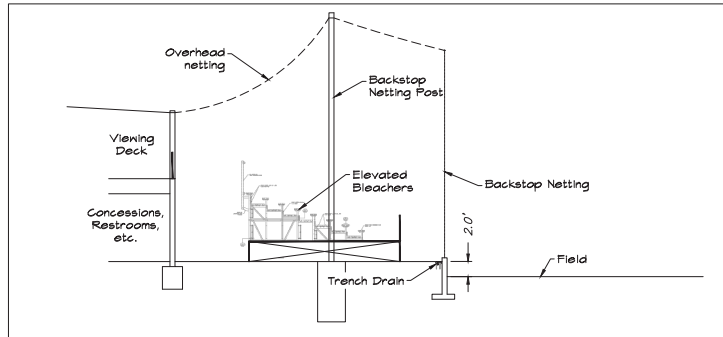


CONCEPT A.5

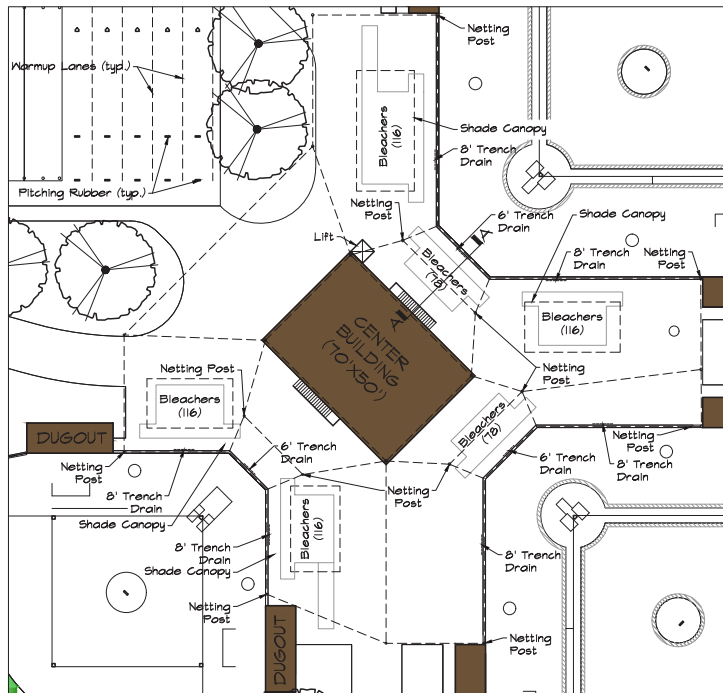
Cico Park Improvements (Baseball Complex)
Date: 3/14/2024

Color Key:

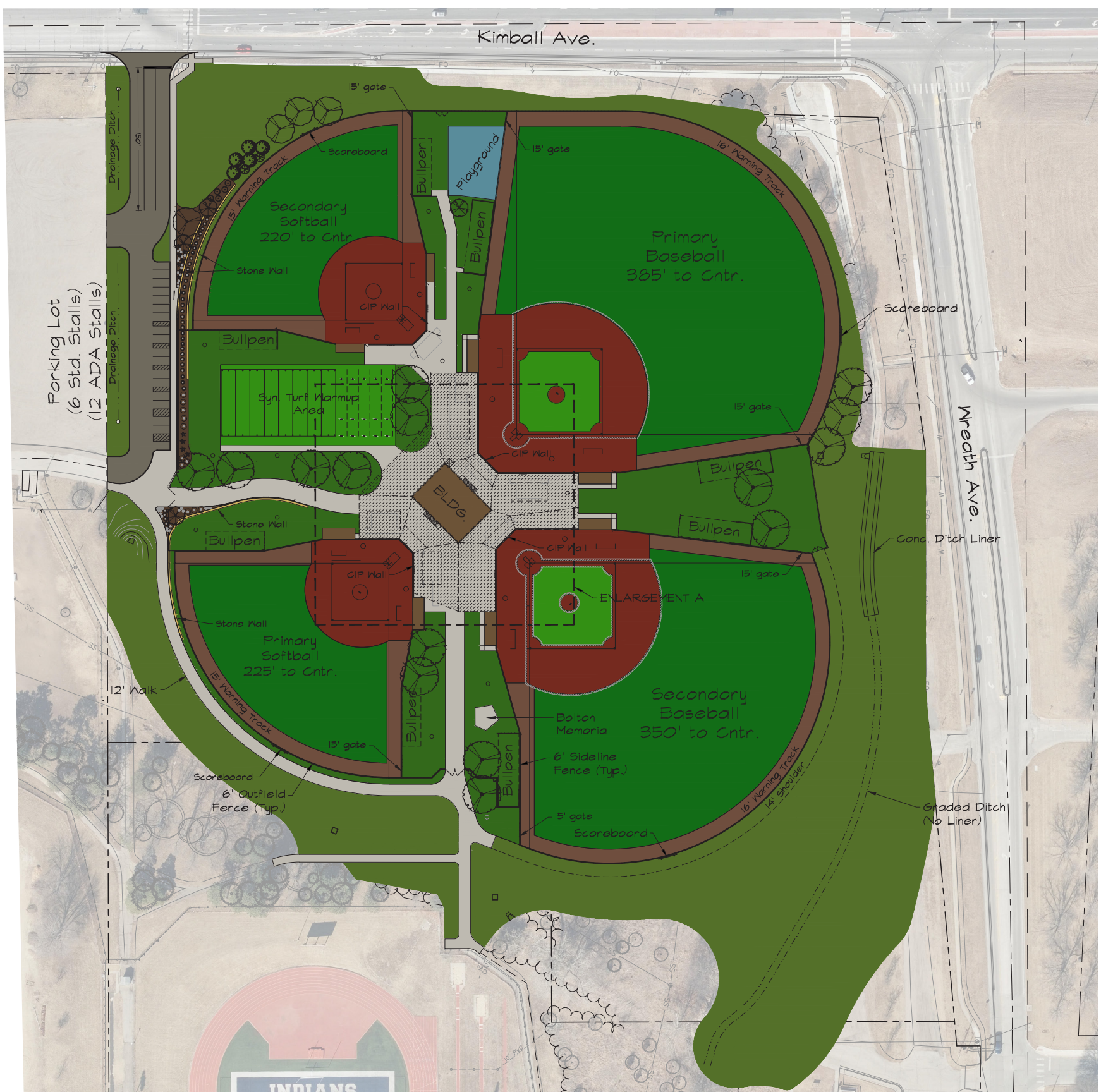
-  Clay/Sand Mix Warning Track
-  Natural Grass Common Areas (Graded & Seeded)
-  Natural Outfield Turf (Laser Graded & Irrigated)
-  Synthetic Turf
-  Synthetic Turf
-  Overhead Netting



SECTION A-A

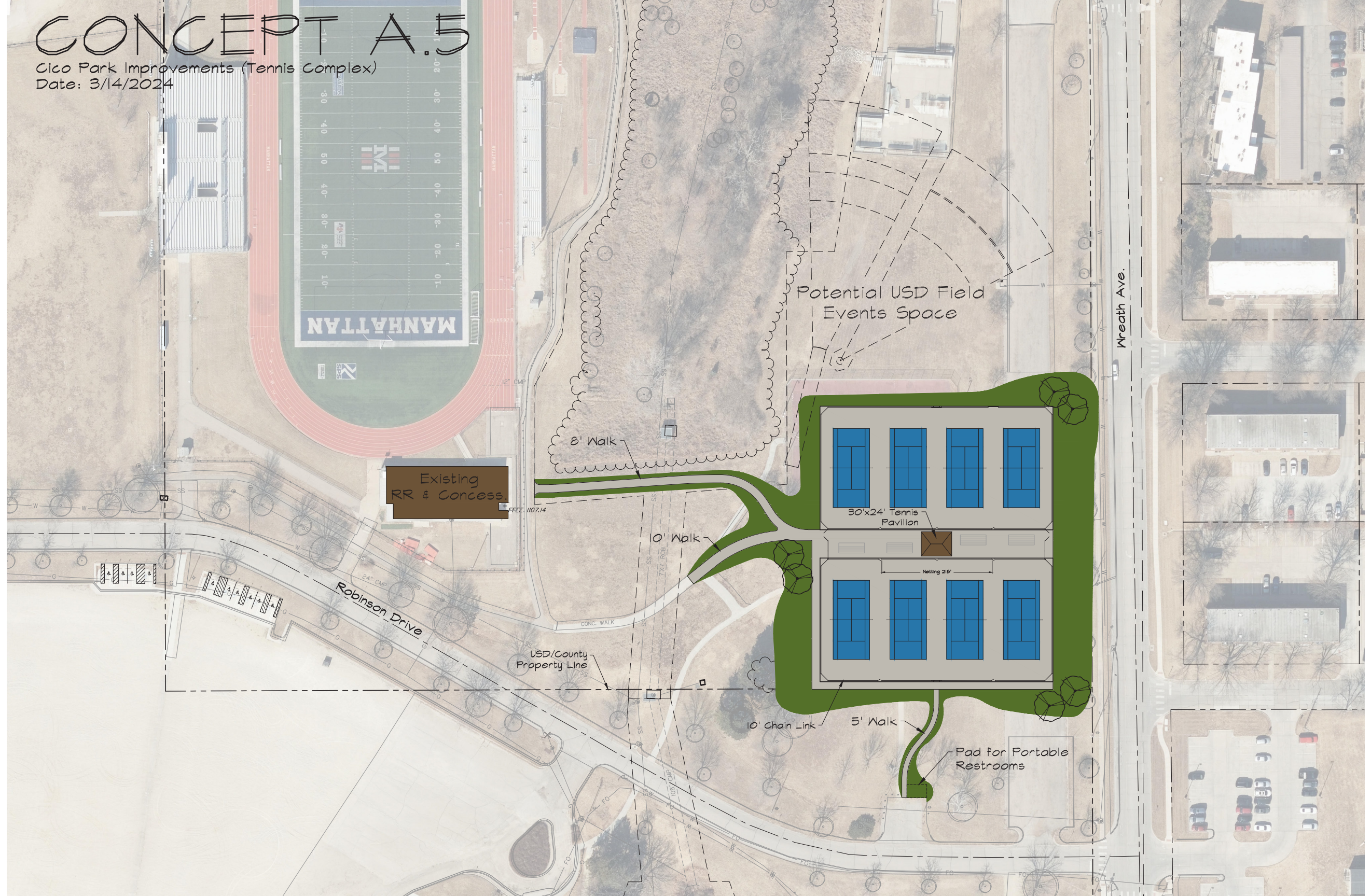


ENLARGEMENT A



CONCEPT A.5

Cico Park Improvements (Tennis Complex)
Date: 3/14/2024



Existing
RR & Concess.

Potential USD Field
Events Space

8' Walk

30x24' Tennis
Pavilion

10' Walk

Netting 216'

Robinson Drive

USD/County
Property Line





10' Chain Link

5' Walk

Pad for Portable
Restrooms

Wreath Ave.

Safety

-  Overhead Protective Netting
-  Fire & Emergency Access
-  Gated Complex for Control
-  Unobstructed Egress
-  Space Allocated to Storm Shelter

CONCEPT A.5

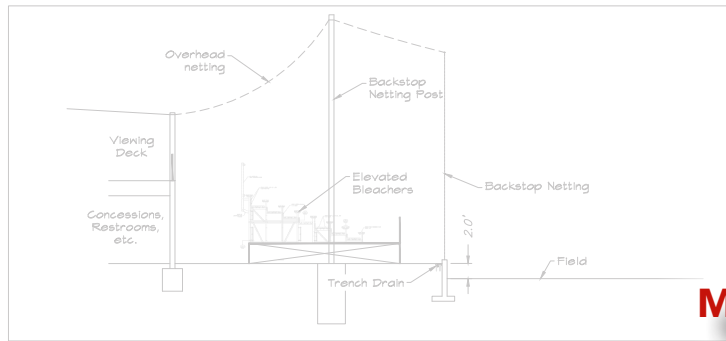
Cico Park Improvements (Baseball Complex)

Date: 3/14/2024

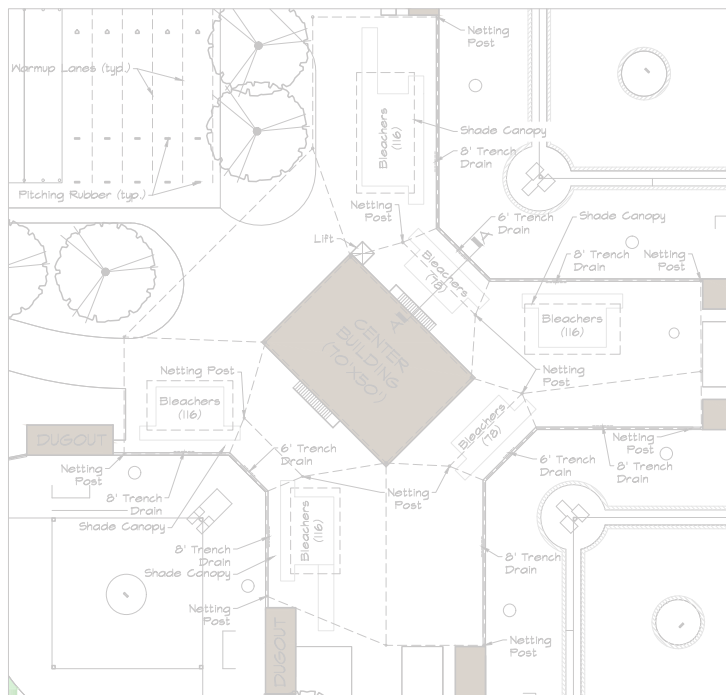
Safety

Color Key:

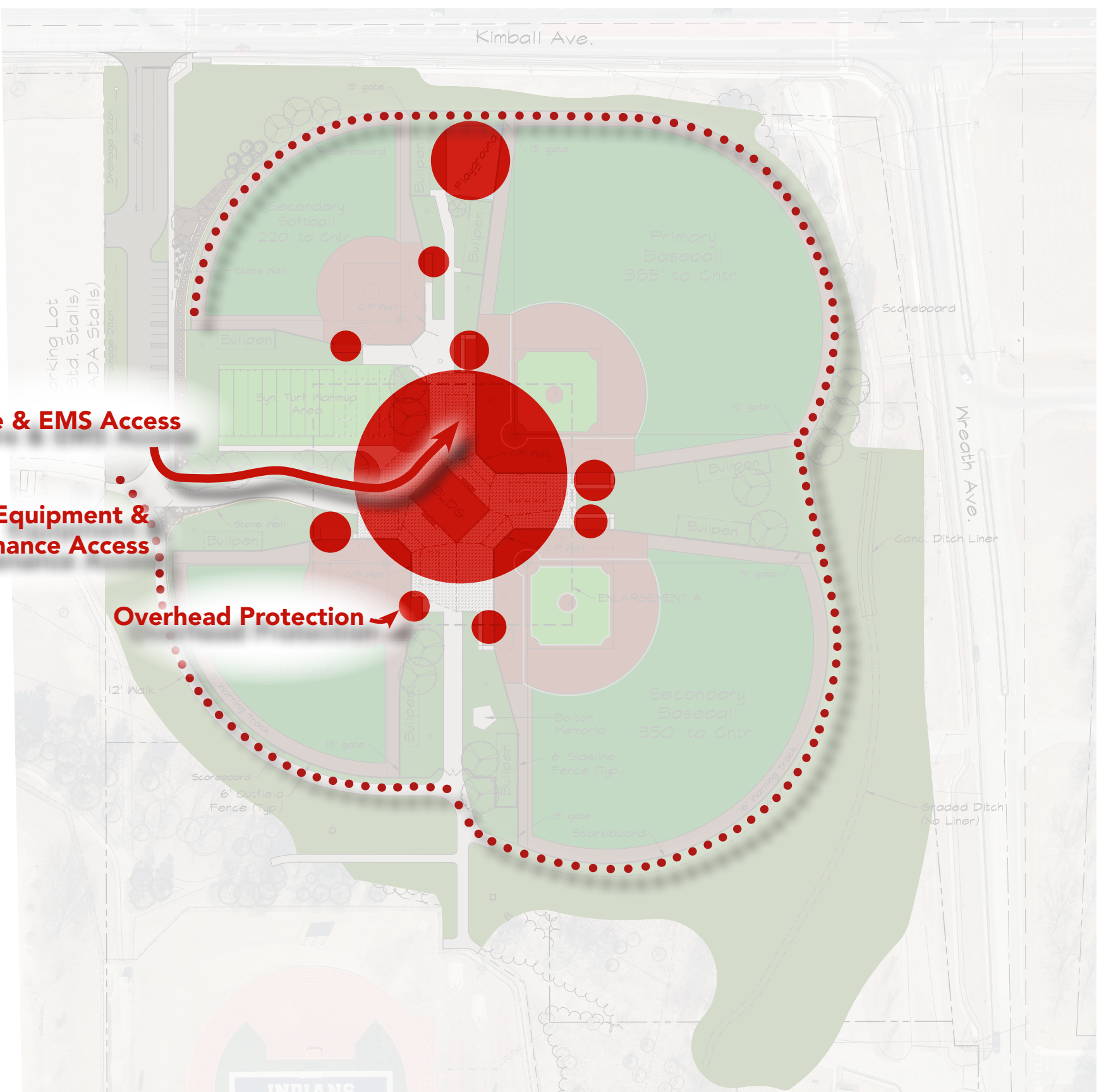
-  Clay/Sand Mix Warning Track
-  Natural Grass Common Areas (Graded & Seeded)
-  Natural Outfield Turf (Laser Graded & Irrigated)
-  Synthetic Turf
-  Synthetic Turf
-  Overhead Netting



SECTION A-A



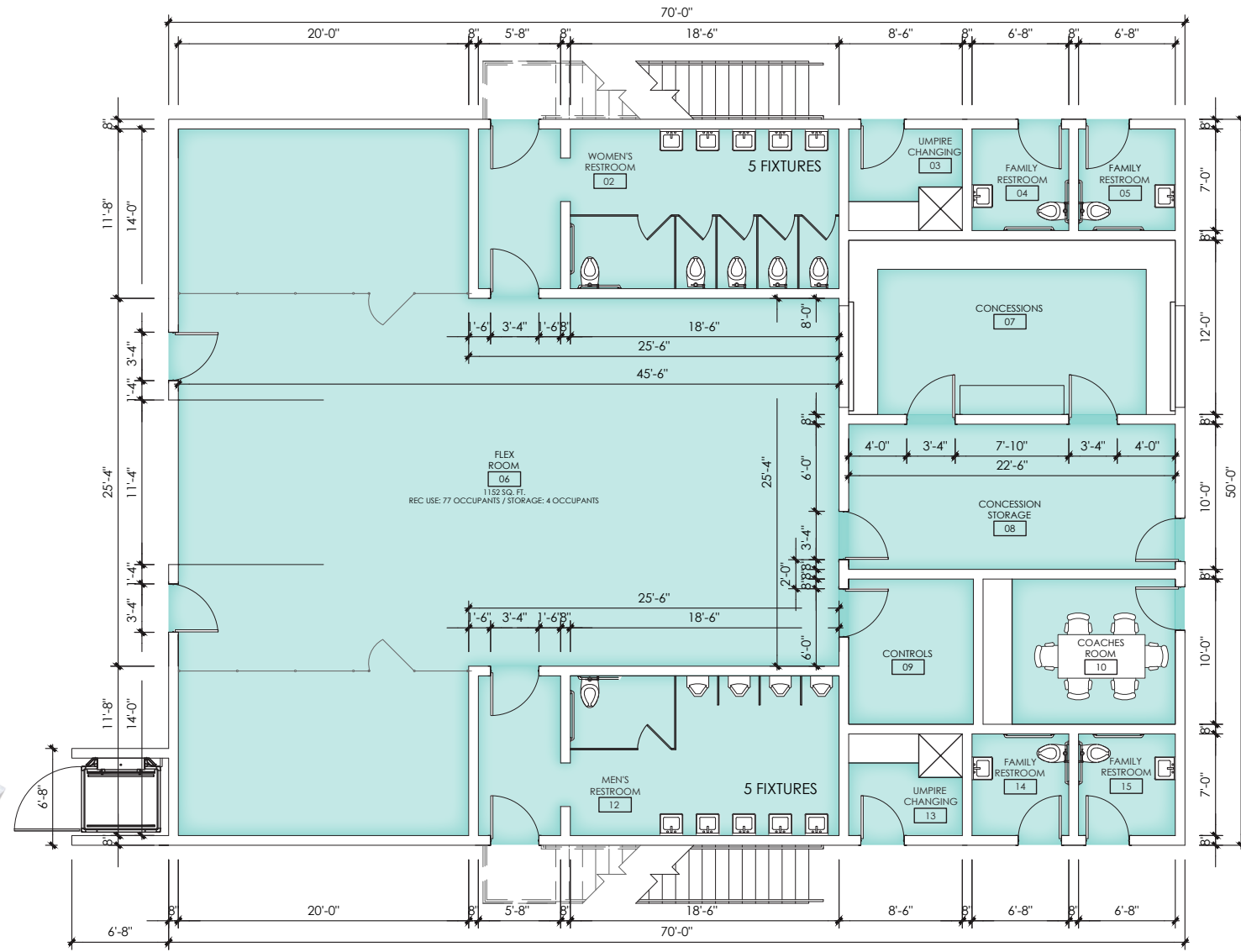
ENLARGEMENT A



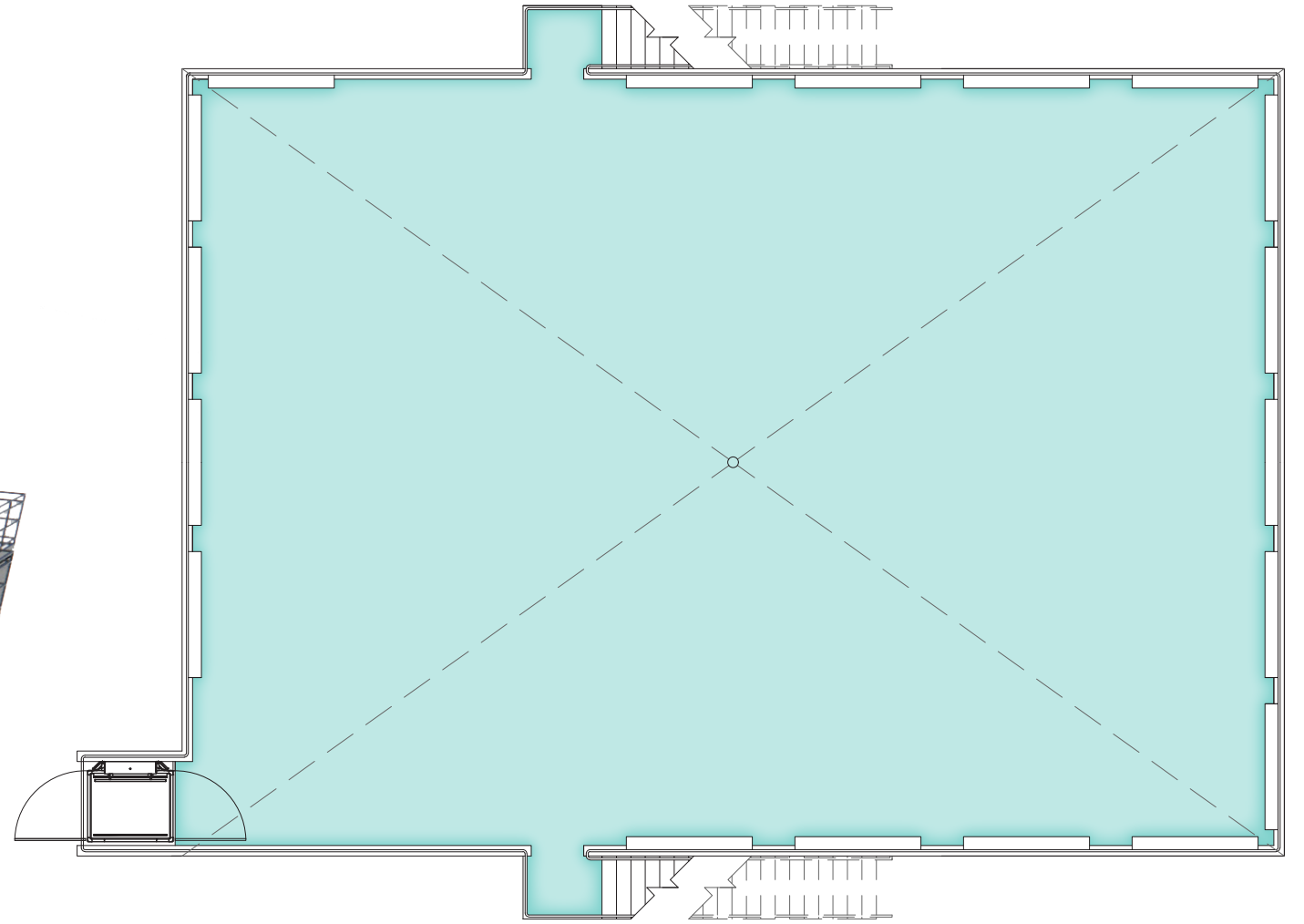
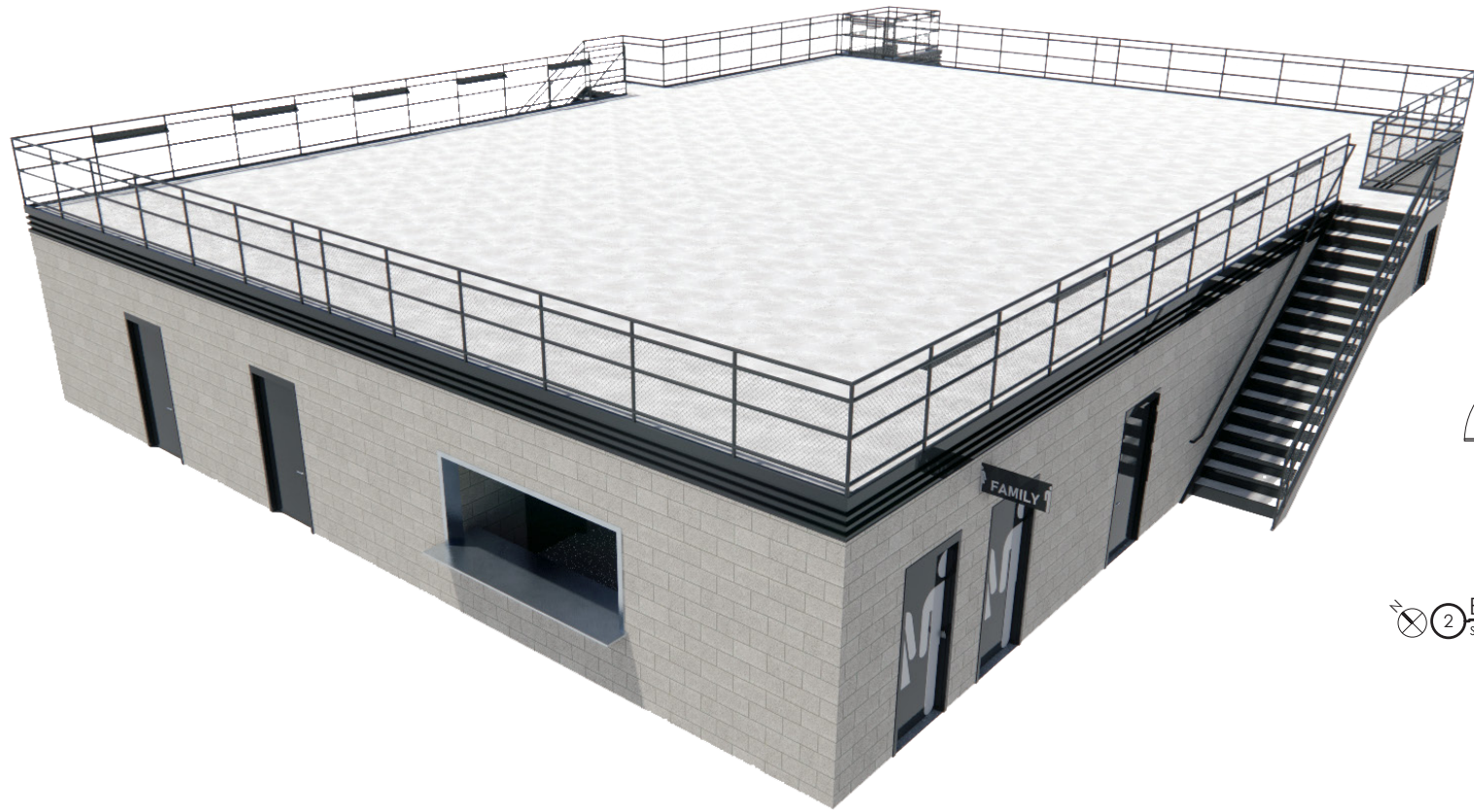
Fire & EMS Access

Equipment & Maintenance Access

Overhead Protection



① MAIN LEVEL CONCOURSE BUILDING
SCALE: 1/8" = 1'-0"



② ELEVATED VIEWING DECK
SCALE: 1/8" = 1'-0"



West Entry



Softball Field (Southwest Field)



Dugouts



Baseball Field (Northeast Field) Pitching Mound



View from Bolton Pavilion



Warm-Up Area



Elevated Viewing Deck



Tennis Courts

Timeline

- **October 2023**
Advisory Committee Appointments | Introductory Meeting.
- **November 2023**
Advisory Committee Investigative Meeting.
- **December 2023**
Advisory Committee Review Meeting. Canceled.
- **January 2024**
Advisory Committee Review Meeting.
- **February 2024**
Advisory Committee Meeting.
- **March 2024**
City Commission Work Session Presentation.
- **April 2024**
Advisory Committee Meeting.
- **May 2024**
Advisory Committee Recommendation
- **June 2024**
Phase 2 Authorization City Vote
- **Spring 2026**
Project Complete.

*Timeline Subject to Change.